

## Silwood Street, London, SE16 2AZ

A contemporary and generous two double bedroom apartment moments from Surrey Quays and South Bermondsey Stations. The property boasts a spacious open plan living space featuring a modern kitchen and private balcony, two generous double bedrooms with plenty of storage space, and a contemporary bathroom. Southwark Park as well as a plethora of local amenities are located on your your doorstep.

Council Tax Band: D

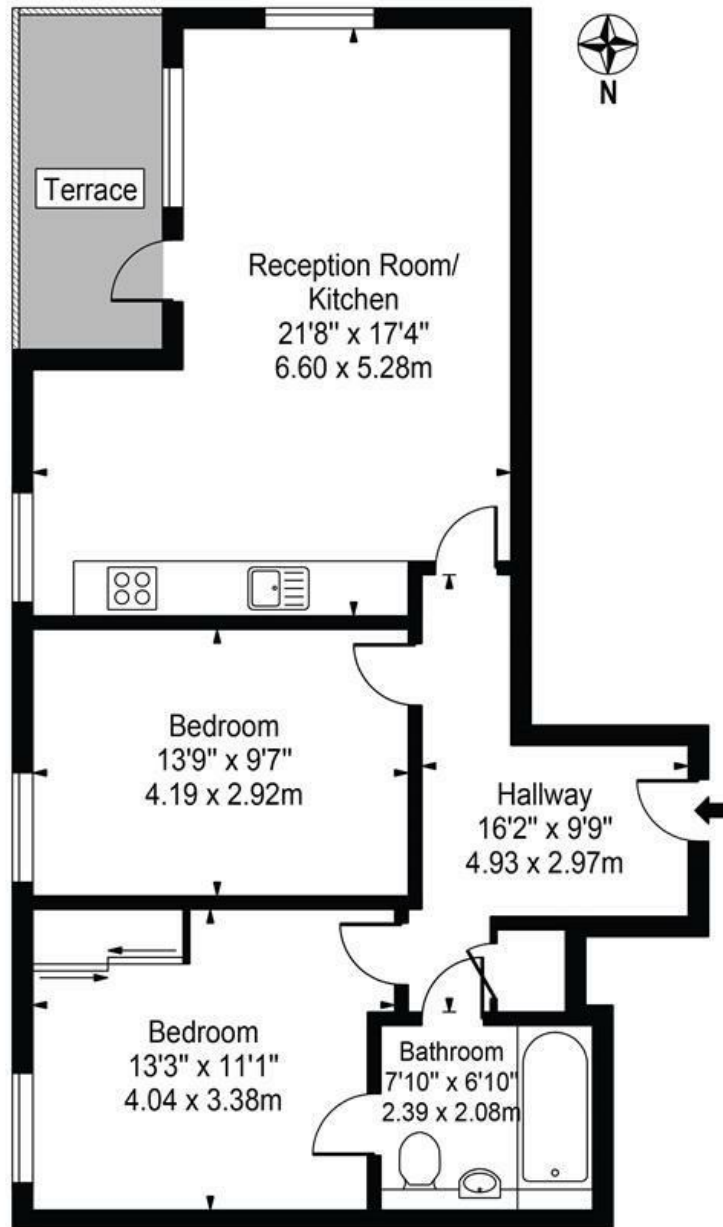
- Heating Including Service Charge
- Private Balcony
- Two Double Bedrooms
- Contemporary Kitchen
- Bicycle Storage
- Moments from Surrey Quays, South Bermondsey Stations
- Modern Apartment

**Alex & Matteo**  
ESTATE AGENTS

**£2,200 Per month**

# Chamberlain Court

Approx. Gross Internal Area 757 Sq Ft - 70.33 Sq M



## Fourth Floor

For Illustration Purposes Only - Not To Scale

This floor plan should be used as a general outline for guidance only and does not constitute in whole or in part an offer or contract. Any intending purchaser or lessee should satisfy themselves by inspection, searches, enquiries and full survey as to the correctness of each statement. Any areas, measurements or distances quoted are approximate and should not be used to value a property or be the basis of any sale or let.

Energy Efficiency Rating		
	Current	Potential
Very energy efficient - lower running costs		
(92 plus) <b>A</b>		
(81-91) <b>B</b>	85	85
(69-80) <b>C</b>		
(55-68) <b>D</b>		
(39-54) <b>E</b>		
(21-38) <b>F</b>		
(1-20) <b>G</b>		
Not energy efficient - higher running costs		
<b>England &amp; Wales</b> EU Directive 2002/91/EC		